



# Guangdong Regional Report 2023

2024 CGCM Meeting  
Hengqin, China  
August 20, 2023



1

# Member Institutes



## Member Institutes

At present, Guangdong Branch of CGCM include 8 member institutes



**Guangzhou University of Chinese Medicine:** One of the earliest 4 Chinese medicine colleges in China.



**Sun Yat-Sen University:** A key university directly of the Ministry of Education, "Double First-Class" university.



**College of Pharmacy, Jinan University:** One of the top pharmacy colleges in China. "Double First-Class" disciplines.



**Guangdong Provincial Hospital of Chinese Medicine (GDHCM):** The largest both in scale and services amount in China.

## Member Institutes

**At present, Guangdong Branch of CGCM include 8 member institutes**



**Southern Medical University:** One of the top universities in China which is the earliest hospital of western medicine with department TCM.



**Guangdong Pharmaceutical University:** One of the top three pharmaceutical universities in China.



**South China Botanical Garden, Chinese Academy of Sciences :** The largest botanical garden in China and one of the protection organization of rare plant resource



**National Engineering Research Center for Modernization of TCM:** One of the earliest 4 engineering centers of Chinese herbal medicine in China.

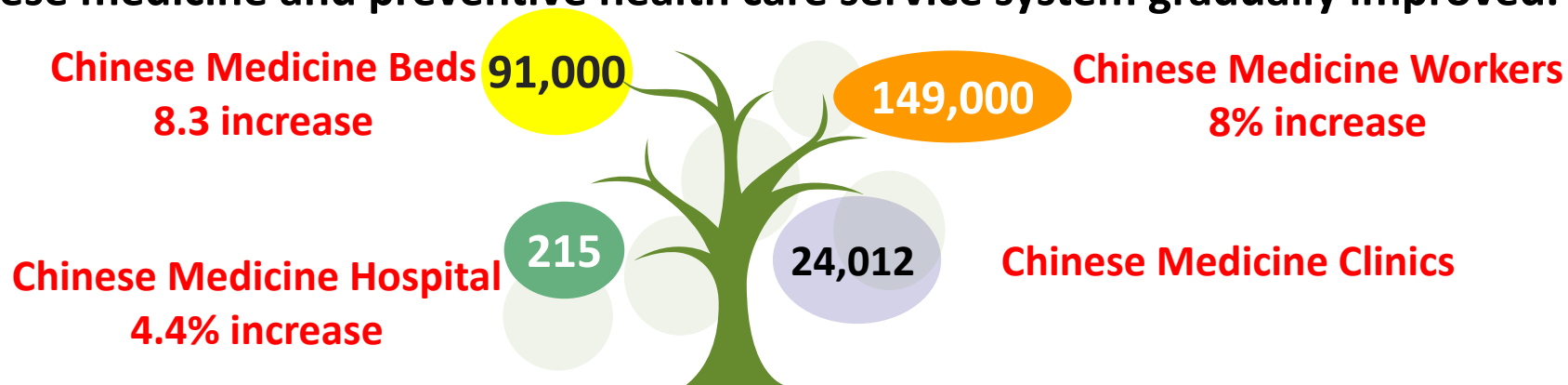
2

## Review of the development in Guangdong



## Medical Care by the end of 2023

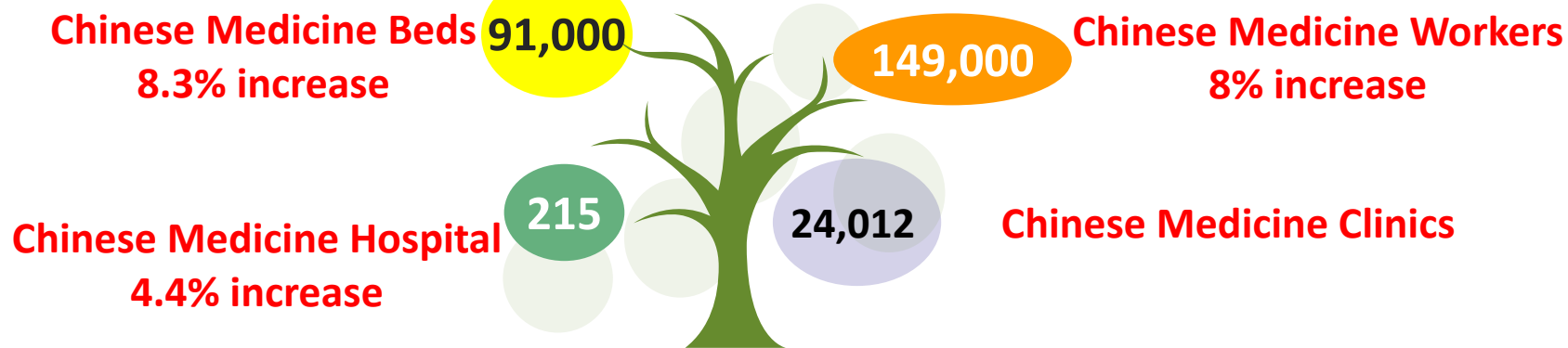
Chinese medicine and preventive health care service system gradually improved.



Chinese Medicine resources in Guangdong continue to grow, the efficiency of service utilization is improved, and the construction of Chinese Medicine service system continues to improve. By the end of 2023, the total number of CM medical institutions in the province reached 24,012, including 215 CM hospitals, 348 CM outpatient departments, 6,601 CM clinics, and 16,848 village clinics (mainly CM).

## Medical Care by the end of 2023

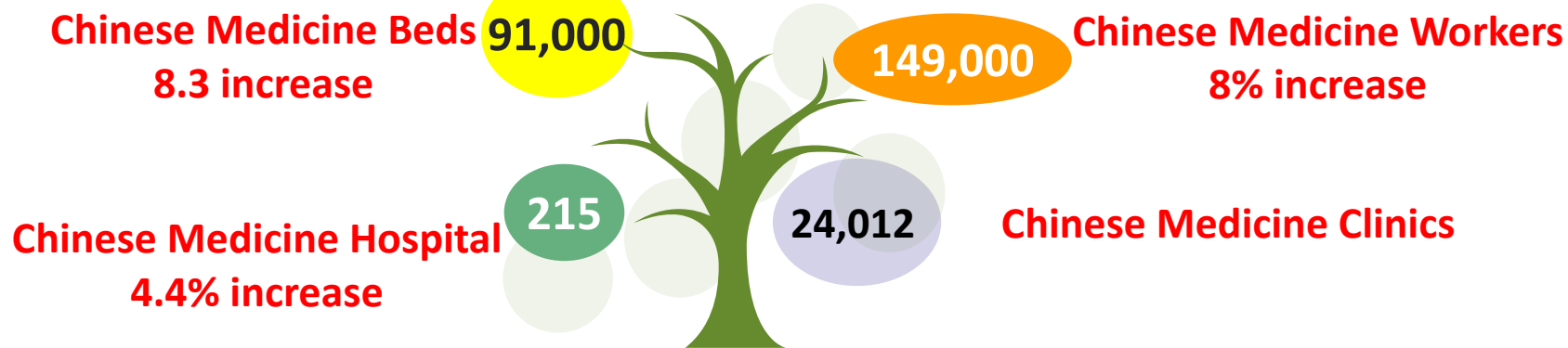
Chinese medicine and preventive health care service system gradually improved.



There are **149,000** employees in traditional Chinese medicine medical and health institutions, accounting for 12.7% of the total in the province. The total number of traditional Chinese medicine beds set up in medical institutions throughout the province is **91,000**, accounting for 14.5% of the province's total.

## Medical Care by the end of 2023

Chinese medicine and preventive health care service system gradually improved.

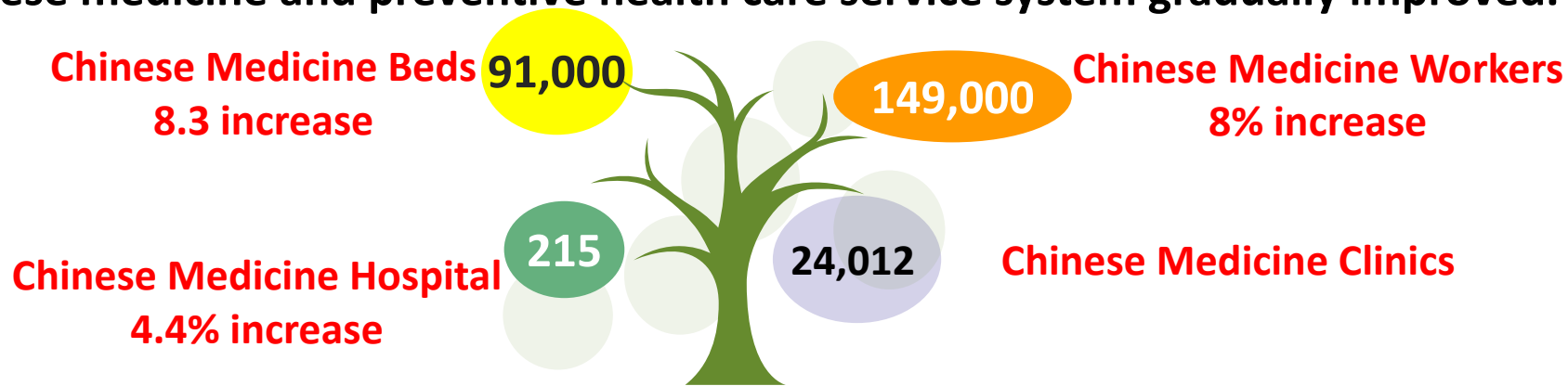


In 2023, CM service **231 million people**, accounting for **25.6% of the total medical service** in Guangdong province. Among them, CM hospitals provided 72.506 million, outpatient provided 25.845 million, village clinics provided 62.241 million, and other institutions provided 70.873 million. Compared with the previous year, the total amount of CM services **increased by 23.6%**.



## Medical Care by the end of 2023

Chinese medicine and preventive health care service system gradually improved.



The number of CM inpatient services in Guangdong province reached **2.996 million**, an **increase of 22.7%** over the previous year, accounting for **14.8% of the total medical service** in Guangdong province. Among them, 2.567 million were discharged from CM hospitals, and 429,000 were discharged from other CM institutions.

The affiliated hospitals of Guangzhou University of CM is at the top of comprehensive medical services. The second affiliated hospital “**Guangdong Provincial Hospital of Chinese Medicine (GDHCM)**” is the one with the largest service within China, with **7.76 million** out-patient services and **190,000** in-patient services in 2023. It has 6 hospital branches and 3 national regional medical centers under construction.



- ❑ Published by Chinese Academy of Medical Sciences
- ❑ The national science and technology value rankings for the year 2022, and the national total science and technology value rankings for the five years 2018-2022.
- ❑ GDHCM both **ranking first among Chinese medicine hospitals** in China.

表 2 2022 年度中国医院科技量值与 2018-2022 五年总科技量值  
(综合)

医院	STEM (2022)					ASTEM (2018-2022)				
	列位	科技产出	学术影响	科技条件	量值	列位	科技产出	学术影响	科技条件	量值
广东省中医院	46	9.02	7.46	3.79	20.27	49	9.14	5.35	3.60	18.09
重庆医科大学附属第一医院	47	10.84	6.99	2.19	20.02	48	10.61	5.46	2.36	18.43
首都医科大学附属北京同仁医院	48	8.05	8.72	3.13	19.90	55	7.46	5.93	2.91	16.30
北京大学肿瘤医院	49	8.46	6.48	4.14	19.08	53	8.10	4.56	4.03	16.69
青岛大学附属医院	50	12.36	4.71	1.83	18.90	47	13.80	3.45	1.60	18.85
广东省人民医院	51	10.21	5.74	2.54	18.49	61	8.96	3.94	2.08	14.98

## Talent Team

## Chinese Medicine talent team is growing

- Academician of Chinese Academy of Engineering  
Xinsheng Yao, Liang Liu
- National Masters of Chinese Medicine  
Daihan Zhou, (new) Yi Lin
- National Famous Doctors of Chinese Medicine  
Maocai Liu, Jianxing Qiu, Huiqing Ouyang  
(new) Zhongde Zhang, Songping Luo, Baotian Chen, Zhiping Lyu



Liang Liu



Yi Lin



Zhongde Zhang



Songping Luo



Baotian Chen



Zhiping Lyu

# Talent Team

Chinese medicine talent team has expand steadily.



- By the end of 2023, there were **63,000 CM physicians** (include assistant) in Guangdong Province, which is **17.5% of the total number of physicians** in the province (including dentists)
- The number of CM physicians has increased by **10.5%** compared to 2022.

# Education

---

- 7 National Key and Cultivation Disciplines
- **41 Key Clinical Disciplines** of State Administration of Traditional Chinese Medicine
- **19 High-level Key Clinical Disciplines** of State Administration of Traditional Chinese Medicine in 2023
- **“Double First-Class”** university and disciplines of the Ministry of Education
  - Sun Yat-Sen University
  - Jinan University
  - Guangzhou University of Chinese Medicine



# Education



- ❑ **Sun Yat-sen University**
- ❑ **21 disciplines enter the 1% of ESI Global Rank**
- ❑ **11 disciplines enter the top 1‰ of ESI Global Rank**
- ❑ **11 disciplines selected for the "Double First Class" construction discipline list**



- ❑ **Southern Medical University**
- ❑ **14 disciplines enter the top 1% of ESI Global Rank**
- ❑ **Clinical medicine enter the top 0.5% of ESI Global Rank**
- ❑ **Pharmacology and toxicology enter the top 1% of ESI Global Rank**



# Education



- ❑ **Guangzhou University of Chinese Medicine**
- ❑ **7 disciplines enter the top 1% of ESI Global Rank**
- ❑ **“Chinese Medicine” discipline is national "Double First Class" construction discipline and also national first level key discipline**

# Education



- ❑ **Jinan University**
- ❑ 19 disciplines in the top 1% of the ESI world ranking, and 11 disciplines in the top 0.5%.
- ❑ Pharmacology and toxicology has ranked in the top 0.1% of the world.



- ❑ **Guangdong Pharmaceutical University**
- ❑ 6 disciplines have successively entered the top 1% of ESI world ranking

# Industry 产业发展

The important distributing centers of Chinese Medicine

- Guangzhou qingping Chinese medicinal materials professional market
- Pu-ning Chinese medicinal materials professional market



- Guangzhou international medicine port
- The Loufu medicine valley
- South China modern Chinese medicine Park



## Scientific Research

---

**The inheritance and innovation progress is remarkable  
Chinese Medicine Award in 2023**

- **1 National Science and Technology Progress Second Award**  
**"Establishment and Application of Traditional Chinese Medicine  
Constitution Identification System"**  
**(Guangzhou Provincial Hospital of Chinese Medicine)**

# High-level Scientific Research Base

## ➤ State Key Laboratory of Traditional Chinese Medicine Syndrome (GDHCM, 2023)

In 2023, it was approved to be established, the first batch of national key laboratories of Chinese medicine in China

## □ “Guangdong-Hong Kong-Macau Joint Laboratory for Pharmacodynamic Constituents of TCM and New Drugs Research”(Jinan University, 2023)

Authorized by the Guangdong Provincial Government.



# High-level Scientific Research Base

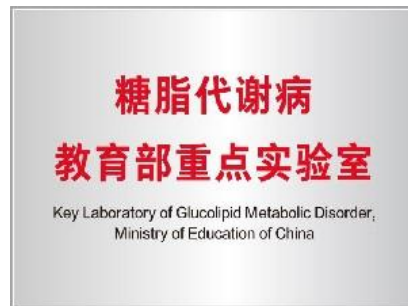
- **State Key Laboratory of Dampness Syndrome of Chinese Medicine**  
**GDHCM**
- **South China National Botanical Garden**  
In 2022, established with the approval of the State Council, it is the second national botanical garden in China





# High-level Scientific Research Base

- **State Key Laboratory for Bioactive Molecules and Drug Formulation Optimization**  
**Jinan University**
- **Key Laboratory of Glycolipid Metabolism Diseases of the Ministry of Education**  
**Guangdong Pharmaceutical University**



# High-level Scientific Research Base

- **State Clinical Medical Research Center**  
**Southern Medical University**
- **2 State Chinese Medicine Clinical Research Center**  
**Guangzhou University of CM, GDHCM**
- **2 National Heritage and Innovation Center**  
**Guangzhou University of CM, GDHCM**
- **National Engineering Research Center for Modernization of TCM**  
**Livzon Pharmaceutical Group Inc., Guangzhou University of CM**





# High-level Scientific Research Base

## ➤ National Incubator for Science and Technology Enterprises

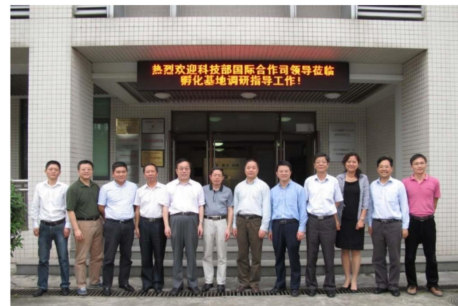
**Guangdong Pharmaceutical University**

## ➤ National innovation platform for the integration of industry and education in medical research

**Guangzhou University of Chinese Medicine**

## ➤ National "Flagship" Cooperation Hospital of Chinese and Western Medicine

**Southern Medical University**



# International Cooperation

Cooperation with more than 30 nations and regions.

Guangdong is adjacent to Hong Kong and Macao, facing Southeast Asia,  
With special cultural, geographical, climate , economic and trade advantages,  
It has cooperated with more than 30 countries and regions in the world.



# International Cooperation



**Cooperate with Malawi in Artemisinin Antimalarial Centerin Research Center**

**(Guangzhou University of Chinese Medicine)**

**China-Australian International Research Center of CM**

**(Guangdong Provincial Hospital of Chinese Medicine, and Royal Melbourne Institute of Technology in Australia)**

**China-Sweden Joint Research Base for CM**

**(Guangdong Provincial Hospital of Chinese Medicine, and Karolinska Institutet in Sweden)**

**Cooperate with Utrecht University in Netherlands**

**(Guangdong Provincial Hospital of Chinese Medicine)**



## Our Good Wish

**Human health will be better served by developing sincere collaboration and conducting significant researches.**

**Looking forward to your sincere cooperation!**



A nighttime photograph of the Guangzhou skyline. The Canton Tower, illuminated in blue and purple, stands prominently on the left. The Pearl River flows in the foreground, reflecting the city lights. Other skyscrapers are visible on the right side of the image.

**Thanks!**